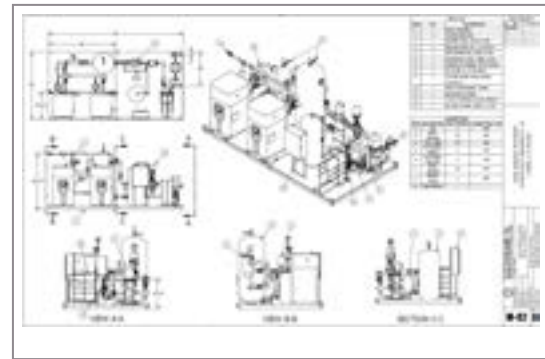
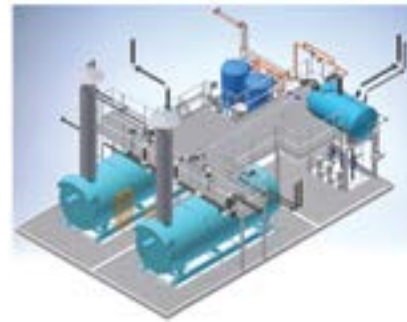


# DOCUMENTATION

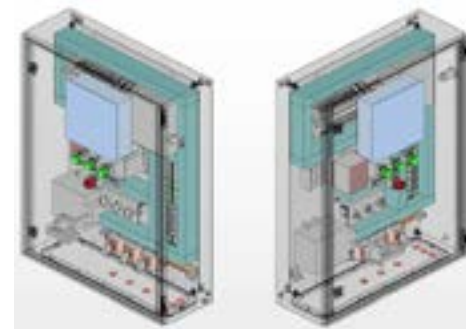
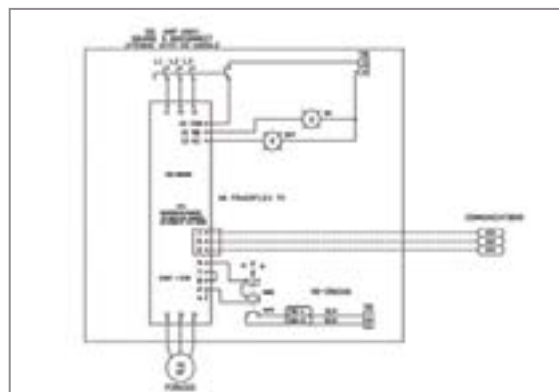
## MECHANICAL

We have a staff of highly experienced draftsmen to produce AutoCAD and Solid Works drawings to include general arrangements, foundation loading, piping configurations, power distribution, electrical wiring, interface/termination and logic flow for our fabricated systems designed in accordance with your specifications.



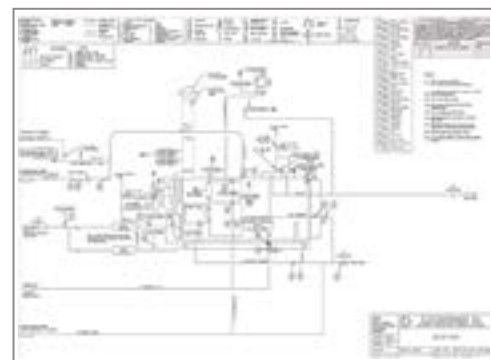
## ELECTRICAL

We provide both hardwired and computer-based systems for supervisory control, motor control center integration, data acquisition, Allen Bradley PLC controls, custom panel view displays and custom systems to meet your specifications.



## SUBMITTALS AND O&Ms

Complete submittal package including mechanical, electrical, seismic, final As-Built documentation with O&M manuals.



# YOUR SINGLE SOURCE PARTNER

### CORPORATE

25920 Eden Landing Road  
Hayward, CA 94545  
510.784.0110

### BAKERSFIELD

3001 Antonino Avenue  
Bakersfield, CA 93308  
661.325.5057

### FRESNO

4912 West Jacquelyn Avenue  
Fresno, CA 93722  
559.498.6949

### LAS VEGAS

3111 S.Valley View Blvd., Ste. E120  
Las Vegas, NV 89102  
702.220.6680

### LOS ANGELES

10261 Matern Place  
Santa Fe Springs, CA 90670  
714.257.0900

### MODESTO

1549 Cummins Drive  
Modesto, CA 95358  
209.576.0726

### RENO

8565 White Fir Street, Unit B2  
Reno, NV 89523  
775.356.0300

### SAN DIEGO

7270 Engineer Road, Suite C  
San Diego, CA 92111  
858.538.5877

### SONOMA/NAPA

642 Martin Avenue, Suite B  
Rohnert Park, CA 94928  
707.586.9234



## PUMPS AND SYSTEMS

- High pressure condensate return systems
- Complete range of process pumps
- Water reduction via alternative seal flush plans and coolers
- i-ALERT®2 Performance Monitoring



## BOILERS AND SYSTEMS

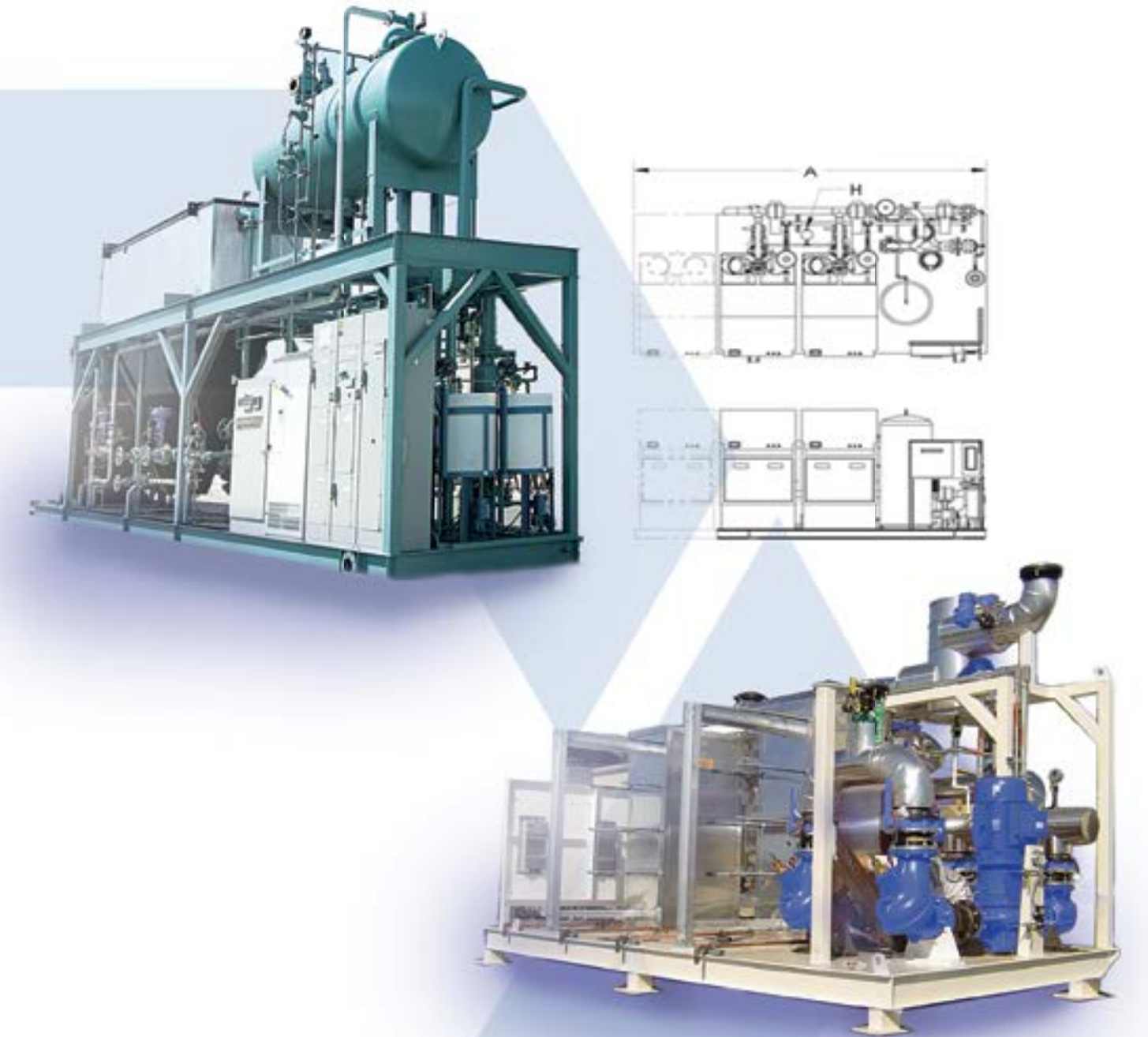
- Full range of commercial boilers from 60,000 to 12 million Btu/hr
- Full range of industrial boilers from 4 to 500 million Btu/hr
- SCR and control system solutions
- Engineering and design support



## SERVICES AND TRAINING

- Rental equipment and mobile boiler rooms
- Full aftermarket service and parts support
- Instrumentation and controls
- Extensive product training and support

# FABRICATED PUMP AND BOILER SYSTEMS



# OUR FABRICATED SYSTEMS COME PRE-PACKAGED WITH CONTROLS, ACCESSORIES AND DOCUMENTATION

## Why Fabricated Systems?

- Compressed Construction Schedules
- Reduced Project Costs
- Optimized Field Labor
- Simplified Field Connections



# YOUR SINGLE SOURCE PARTNER FOR OVER 60 YEARS

**Looking for genuine replacement Parts? We have them!**

Our extensive inventory of pump and boiler parts and accessories are available for immediate shipment. Our parts departments and service technicians are among the best in the industry.

Uptime is critical to your business. We offer **24 Hour Emergency Service, 365 Days a Year!**

**We have you covered. Call your local office** (back page)

- |                                    |                                     |                                     |
|------------------------------------|-------------------------------------|-------------------------------------|
| • Systems Replacement and Upgrades | • Preventative Maintenance Programs | • Contract Maintenance and Service  |
| • Field Service and Installation   | • Annual Inspections                | • Field Startup and Troubleshooting |
| • Local Inventory                  | • Training                          |                                     |

## PACKAGED PUMP SKIDS

CART MOUNTED PUMP PACKAGE



- Rotary Lobe Pump
- VFD Controlled
- Pump Protection Features

STEAM CONDENSATE RETURN PACKAGE



- High Pressure/Condensate Return System
- Pre-Piped
- Automatic Valves and Sensors Mounted and Wired
- Low NPSH Vertical Inline Pump

PRE-PACKAGED PUMPING STATION



- Split-Case Pump
- PumpSmart Drive System
- Interconnecting Piping and Valves

PRE-PACKAGED BOOSTER SYSTEM



- Triplex Pump System
- Variable Speed with Controller
- Stainless Steel Base and Manifolds

BOILER FEED PUMP PACKAGE



- Multi-Stage Ring Section Pump
- Steam Turbine Drive
- API Baseplate

ROTARY GEAR PUMP SKID



- 10" Rotary Gear Pump
- 75HP Motor with Gear Reducer
- API Baseplate

## PACKAGED BOILER/HOT WATER SKIDS

HOT WATER PACKAGE



- Outdoor Assembly
- Primary/Secondary Pumping
- Pre-Piped and Wired

DOMESTIC HOT WATER PACKAGE



- Commercial Heating
- Pre-Piped and Wired
- Domestic Water Service
- Compact Footprint

HOT WATER PACKAGE



- Pre-Piped and Wired with Controls
- Steam to Hot Water Heat Exchanger with Circulating Pumps
- Duplex Condensate Return Set
- Expansion Tank
- Chemical Feeder

COMMERCIAL PACKAGE



- 9.5HP High Pressure "Cal Special" Steam Boilers
- Pre-Piped and Wired
- Controls and Instrumentation
- Does Not Require Attendance (per California Code Title 8)

MODULAR CENTRAL PLANTS



- Pre-Piped and Wired
- Deaerating Feedwater Heater
- Variable Speed Pumping and Integrated Controls
- Open or Enclosed Designs
- Controls and Instrumentation

MOBILE STEAM PLANT



- Trailer Mounted
- High pressure Steam with Domestic water Supply
- Pre-Piped and Wired
- Integrated Controls and Instrumentation

HOT WATER PACKAGE



- Small Footprint
- Pre-Piped and Wired with Controls
- Circulating Pumps and Heat Exchanger

HYDRONIC HEATING PACKAGE



- Primary/Secondary Pumping
- Variable Flow Pumping
- Pre-Piped and Wired